

INDIANA UNIVERSITY

EMERGENCY ACTION PLAN

For

Herman B Wells Library
BL209

The Office of Library Administration

Address: 1320 East 10th Street

Bloomington, Indiana 47405

Phone: (812) 855-3403

Fax: (812) 855-2576

Date Revised: October 5, 2009

TABLE OF CONTENTS

I.	PURPOSE.....	4
II.	SCOPE	4
III.	GENERAL PROCEDURES	4
	A. Pre-planning.....	4
	B. Notification of Emergency Warning.....	4
	C. Emergency Alarms and Advisories	5
	1. Sprinkler Alarm – Smoke Detection – Fire Alarm	5
	2. Homeland Security Advisory System.....	5
	3. Emergency Sirens	5
IV.	ASSIGNMENTS AND RESPONSIBILITIES	5
	A. Establishing the Emergency Control Committee.....	6
	B. Persons Providing Assistance	6
	C. Responsibilities	6
	1. Emergency Control Committee Responsibilities.....	6
	2. Floor Warden Responsibilities.....	7
V.	EMERGENCY CONTROL CENTER.....	7
VI.	EVACUATION ROUTES & MEETING PLACES.....	7
VII.	DISABILITIES	7
VIII.	RESPONDING TO EMERGENCIES	8
	A. To Summon Assistance	8
	B. Fire Procedures	9
	C. Tornado or Severe Thunderstorm Procedures	10
	D. Blizzard Procedures	11
	E. Earthquake Procedures.....	11
	F. Flood Procedures	11
	G. Hostile Intruder	12
IX.	MEDICAL EMERGENCIES	12
X.	PROCEDURE FOR EMERGENCY SHUTDOWN OF OPERATIONS ...	13
XI.	CHEMICAL, BIOLOGICAL, RADIOLOGICAL, NUCLEAR, EXPLOSIVE (CBRNE) THREAT	13
	A. Telephone Threat	14
	B. Written Threat.....	14
	C. Suspicious Package.....	14
	D. Bomb/CBRNE Threat Evacuation.....	15
	E. Telephone Bomb/CBRNE Threat Checklist.....	16
XII.	HAZARDOUS SUBSTANCE	17
	A. Incidental Release	17
	B. Emergency Response Situation.....	18
	C. Response Flow Chart	19
XIII.	FIRE PREVENTION AND WORKPLACE HAZARDS.....	19
	A. Employee Responsibility	19
	B. Typical Fire and Workplace Hazards	20
	C. Housekeeping.....	20
	D. Maintenance of Fire Equipment and Systems	20
XIV.	NEWS INFORMATION.....	21

XV. POST-EMERGENCY EVALUATION	21
XVI. FOR FURTHER INFORMATION	21
XVII. DEFINITIONS	22

I. PURPOSE

The purpose of an Emergency Action Plan is to protect IU employees from serious injury, property loss, or loss of life, in the event of an actual or potential major disaster. A major disaster may include, but is not limited to, any of the following: fire, tornado, earthquake, bomb threat, or hazardous chemical spill. In the event of a major disaster, this Emergency Action Plan describes the initial responsibilities and actions to be taken to protect all employees until the appropriate university or municipal responders take over.

II. SCOPE

For the protection of IU employees, an Emergency Action Plan is a requirement of OSHA 1910.38. It is also necessary and prudent for the protection of our students and visitors. It is a requirement that the employer review with each employee upon their initial assignment or when the plan changes, those parts of the plan that the employee must know to protect her/himself in the event of an emergency. In addition, the written plan shall be made available for employees to review and plan for their evacuation.

III. GENERAL PROCEDURES

It is impossible to provide specific information for all situations. There is no guarantee implied by this plan that a perfect response to disasters or emergency incidents will be practical or possible. Therefore, this plan is a guide for employees to familiarize themselves with basic emergency planning, response and evaluation.

A. Pre-planning

Preparation will increase the margin of safety in an emergency. To evacuate successfully:

1. Train employees in ways of assisting others.
2. Inform employees how to communicate in an emergency.
3. Assign specific tasks.
4. Identify employees with specific needs.
5. Provide a building specific plan.
6. Evacuation route maps are posted in the building. Employees should know at least two evacuation routes. The following information is marked on the maps.
 - Emergency and accessible exits
 - Evacuation routes
 - Location of fire extinguishers
 - Fire alarm pull station locations
 - Tornado shelters
 - Areas first searched

B. Notification of Emergency Warning

In the event of a disaster, the warning may come from any of the following sources: commercial radio or television, Indiana University stations: WFIU 103.7 FM and WTIU Channel 30, NOAA radio, building smoke detection or sprinkler system, emergency siren, web/internet, private citizen, or Indiana University Police Department (IUPD). It is recommended that several sources be monitored to assist in determining when emergency situations exist since no one system can cover all circumstances. A person receiving notification of a possible disaster or a building emergency should immediately sound the alarm to notify employees and IUPD. (e.g. In case of fire, Yell, "Fire!" pull building alarm, call other offices, etc.) Inform immediate supervisor who will continue notification up the Chain of Command. The building emergency alarm system is reserved for total evacuation of the building.

C. **Emergency Alarms and Advisories**

1. **Sprinkler Alarm – Smoke Detection – Fire Alarm**

In the event of a fire, sprinkler and/or HVAC smoke detection systems **will** activate the alarm automatically. The Ademco dialer **will** send a notification to IUPD/Control Center. Manual alarms are located on each floor. **Sub-basement Archives storage area and trash storage room near the dock are the only areas with sprinklers.**

2. **Homeland Security Advisory System (HSAS)** is the national advisory system that provides a means of disseminating information regarding the risk of terrorist acts.

- a. **Low Condition – Green**
- b. **Guarded Condition – Blue**
- c. **Elevated Condition – Yellow**
- d. **High Condition – Orange**
- e. **Severe Condition – Red**

For more information go to:

<http://www.whitehouse.gov/news/releases/2002/03/20020312-1.html>
or type "homeland security color codes" into the web search engine.

3. **Emergency Sirens**

When you hear a *steady wail* it means that a tornado has been sighted in Monroe County or the National Weather Service has issued a tornado warning. Take cover immediately. Tune to local cable TV or radio stations.

When you hear a *fast wail* it means that some type of unusual emergency has occurred, such as a hazardous chemical spill. Go indoors. Tune to a local cable channel or radio station for further instructions.

IV. **ASSIGNMENTS AND RESPONSIBILITIES**

- A. The Building Manager shall obtain volunteers to perform the duties of the Emergency Control Committee and floor wardens. Emergency Control Committee will report to the Emergency Control Center (See Section V), unless the prevailing situation dictates otherwise. **Communication will be by public address system, or voice with the ranking member in charge.**

Emergency Control Committee, consisting of one staff member and one alternate from each floor (if applicable):

- **Alexis Andronikos, IC/UGLS**
- **Jennifer Chaffin, Human Resources**
- **Jim Champion, Building Manager**
- **Jill Clancy, SLIS**
- **Angela Dresselhaus, Technical Services**
- **Jane Goldsmith, Chief CWA steward**
- **Lynn Hufford, Preservation**
- **Randy Lent, Circulation Security**
- **Jenny Kelly, LHR**
- **Arlene Merkle, SLIS**
- **Diana Payne, Google Project**
- **Fran Sturgis, Stacks Manager**
- **Hans van der Genugten, Technical Services**

- B. Persons providing help to those requesting assistance: Floor Wardens & Asst. Floor Wardens:

- **Stacks Supervisors**
- **Martha Harsanyi – Media & Reserve Services**

- C. Responsibilities

1. Emergency Control Committee

- Review plan annually, revise as necessary, and make copies available to building employees and the Office of Risk Management.
- Plan training exercises to test evacuation plan.
- Instruct personnel of their duties.
- Determine method of monitoring for emergency situations.
- Determine method of notifying building occupants of emergency.
- In any emergency situation, the ranking member of the Main Library Emergency Control Committee present shall have initial authority to coordinate procedures, and amend, modify or supersede any provisions of this plan in order to ensure employee safety.
- Report missing or injured occupants to emergency personnel.
- Assess nature and extent of all emergencies.
- Assume initial control of all emergency actions until IUPD arrives, then:
 - Obtain volunteers to carry out specific actions.
 - Develop system to assist persons who need assistance.

- Order evacuation, if deemed necessary.
- Take any other action necessary to protect life.

2. Floor Wardens

- Obtain recommended training: First Aid/CPR, Warden Training, Fire Extinguisher and additional training as necessary.
- When the alarm activates, quickly check rooms on their floor as they exit the building. Advise anyone they see of the need to evacuate.
- Assist persons who need assistance.
- Once out, advise building ECC and/or emergency personnel of anyone remaining in the building.
- Keep occupants from reentering building until advised by ECC or emergency personnel that reentry is allowed.

Note: Often times, Emergency Control Committee members receive Floor Warden training and perform the duties of both positions.

V. EMERGENCY CONTROL CENTER

When sheltering in place, emergency actions should be coordinated from the Emergency Control Center located at the Wells Library Research Collections Circulation Counter. The phone number for the ECC is 855-4501.

VI. EVACUATION ROUTES & MEETING PLACES

- A. Maps of evacuation routes are displayed in hallways and departments. Each map will show the way to an exit, depending on where employees are located in the building. The building manager shall verify that the signs are in place and up to date. It will be the responsibility of the first-line supervisor to inform employees of evacuation routes. Meeting places will be established to account for individuals.
1. Primary meeting place: **Wells Library south parking lot, near the cafeteria entrance. Employees should look for and congregate near their supervisors to assist in accounting for departmental personnel.**
 2. Inclement weather meeting place: **Fine Arts Lobby.**
- B. Establish a procedure to account for employees in departments and/or floors: **Supervisors are to account for employees in departments &/or floors.**
- C. Establish a procedure for reporting to the Emergency Control Committee and emergency personnel any missing, trapped or injured occupants: **Supervisors shall report missing, trapped or injured occupants to the Emergency Control Committee and emergency personnel.**

VII. DISABILITIES

In an emergency, each person has different skills and abilities. The employee with a disability is responsible for informing her/his department administrator or immediate supervisor that she/he will require assistance during an evacuation. It is important not to

assume that persons with obvious disabilities need assistance, or to assume what type of assistance they may need.

- A. Assign a designated area for persons who may need assistance when evacuating, (e.g. hearing, mobility, vision or speech impaired, the elderly and children). The area for rescue assistance will have direct access to an exit, where those who are unable to use stairs or who are unable to navigate the emergency route may remain. Examples in this building:
 - 1. One-hour fire-resistive hallway adjacent to an exit.
 - 2. Vestibule located next to an exit enclosure.
 - 3. Stairway landing within a smoke proof enclosure. Position the person so they do not obstruct the exit.

- B. Department heads should discuss with individual employees who have obvious disabilities, those who have informed them of any special needs, and all newly hired, what assistance they may need and determine how they will communicate. (For further information go to: <http://www.eeoc.gov/facts/evacuation.html>)

Those who indicate they may need assistance should be listed on the addendum attached to the back of this Emergency Action Plan. The information it contains is confidential and will be made available only to the person's immediate supervisor, the building manager, the Office of Risk Management, and/or the chairperson of the building's ECC. It is not to be posted on the web as part of this Emergency Action Plan.

- C. If a person remains in an area to await rescue, then she/he must inform evacuating building occupants of her/his location.

- D. IU employees are not expected to endanger their own lives to assist with the evacuation of an employee, student or visitor. However, if an employee assists a person with a mobility impairment to a designated area, or is informed of a mobility impaired person remaining in a designated area, she/he must immediately inform responding emergency personnel or building representatives of the location of the person. (If possible, leave a two-way radio with those in an area awaiting rescue assistance.)

VIII. RESPONDING TO EMERGENCIES

Each emergency requires a different response. In bomb threat, hazardous material spill or tornado emergencies, employees may be sheltered in place. At other times building evacuation is the appropriate action. Following is information to summon emergency personnel and/or evacuate the building:

- A. **To summon immediate assistance, using a building or cell phone, telephone 911 to report an accident, serious injury or a crime in progress. After calling 911, contact the Research Collections Circulation Counter at 855-4501 so they may assist in directing emergency personnel to the location of the emergency.**

FIRE, POLICE, AMBULANCE.....911

911 or 9-911 from IU building phones connects to IUPD.
911, the only emergency number for cell phones, connects to City Dispatch.

PHYSICAL PLANT/OPERATIONS

(Utilities, Building Services, etc.).....855-8728

PRESERVATION LAB 8:00 AM to 5:00 PM.....855-6281
After hours.....855-8728

RED EMERGENCY PHONES.... Located on each stack floor in the Wells Library, sometimes two per floor. When the receiver is lifted, a call is automatically placed to a dedicated emergency phone at Research Collections Circulation Counter. The emergency phone may also be reached by dialing 855-4501. Calls to this number should be limited to emergencies of a serious nature.

- B. **Fire Procedures:** To evacuate the building upon seeing smoke/fire or hearing the fire alarm (other types of evacuation are covered elsewhere in this document):
1. Verbally warn employees in the immediate area, (such as yelling, “FIRE!”) and activate alarm upon discovery of smoke or fire. The signal for a building wide evacuation will be the sound of the fire alarm. All employees are required to evacuate the building, unless otherwise assigned or authorized to remain by the emergency agency in charge. The alarm may not sound continuously. If the alarm stops, continue the evacuation and warn others who may attempt to enter the building after the alarm stops.
 2. **DIAL 911** from a telephone in a safe area to report the incident to IUPD. (There may be a 4 second delay before the operator answers.) The IU dispatcher is responsible for contacting the appropriate department or agency.
 3. Give your name, building room number and type of emergency.
 4. Stay on the line until you have given all necessary information.
 5. After calling 911, contact the Research Collections Circulation Counter at 855-4501 so they may assist in directing emergency personnel to the location of the emergency.
 6. **CLOSE THE DOORS AS YOU LEAVE**
 7. Use Stairways. When out, move away from the building to a prearranged assembly area for a head count. Leave walks and drives open for fire and emergency responders.
 8. If necessary for a safe, orderly evacuation, activate fire extinguishers or fire hose. At the discretion of the individual, use extinguisher if trained and assigned to do so.
 9. Notify:
 - a. Fire fighters if you suspect someone may be trapped inside the building.

- b. The Research Collections Circulation Counter, immediate supervisor, the ECC Chairperson, proper agencies for any needed services and the highest ranking member of the Emergency Control Committee.

- Building Manager and ECC Chairperson:
Jim Champion - 855-9299

C. **Tornado or Severe Thunderstorm Procedures**

In the event of a tornado or severe weather warning, the following procedure should be put into effect.

1. Listen for latest advisories on commercial and/or weather radio. (WTTS, 92.3 FM is the local Emergency Alert System station for Bartholomew, Brown, Decatur, Jackson, Lawrence and Monroe Counties.)

- a. Tornado or Thunderstorm Watch: Weather conditions are favorable for the possible development of tornadoes or severe thunderstorms. Continue normal activities but have someone monitor the situation and notify others if conditions deteriorate.

Post spotters (any employee) at window to observe and report imminent weather changes during a tornado watch. Inform supervisor and/or building manager if deteriorating weather occurs or if tornado warning is issued. (Training is available from the National Weather Service to become an official severe weather spotter.)

- b. Tornado or Thunderstorm Warning: A tornado or thunderstorm is occurring or is sighted in the area. In addition to dark clouds and/or hail the emergency siren may sound.

The warning siren is a steady wail. It sounds when there is a tornado in the area. If you hear the siren, check your floor to make sure that everyone has heard the siren. Then immediately move personnel to the designated safe assembly area, such as the lowest level of your building without windows. For example, a restroom, center stairwell, hallway or office. Close the door. The siren typically sounds for five minutes. There is no "all clear" signal. Stay sheltered until the all-clear is given by the National Weather Service. **Direct library employees and patrons to restrooms, stairwells, interior rooms or hallways. AVOID glass areas, exterior walls and main level lobby. Do not leave the building. Stay sheltered until the all clear is given by the National Weather Service. CASD will notify employees and patrons via the PA system when the tornado warning has expired.** If you are outside when you hear the siren, take cover in a building close by.

2. If necessary, initiate emergency shutdown procedures.
3. After tornado passes, restore calm and check for injuries.
4. Report injuries and damage to IUPD via 911, then Risk Management.

D. Blizzard

1. If indoors:
 - a. Stay calm and await instructions from the designated official.
 - b. Stay indoors!
 - c. If there is no heat:
 - Close off unneeded rooms or areas.
 - Stuff towels or rags in cracks under doors.
 - Cover windows at night.
 - d. Eat and drink. Food provides the body with energy and heat. Fluids prevent dehydration.
 - e. Wear layers of loose-fitting, lightweight, warm clothing, if available.
2. If outdoors:
 - a. Find a dry shelter. Cover all exposed parts of the body.
 - b. If stranded in a vehicle:
 - Stay in the car or truck.
 - Run motor about ten minutes each hour. Open the window a little for fresh air. Make sure exhaust pipe is not blocked.
 - Make yourself visible to rescuers.
 - Exercise to keep blood circulating and to keep warm.

E. Earthquake

An earthquake usually occurs without any type of warning. Due to the suddenness, all personnel should attempt to get under a table or desk, or any place that the employee feels is safe. Standing in a doorway is not recommended. After an earthquake has stopped, initiate the following procedure:

1. Stay calm and await instructions from the designated official.
2. Keep away from overturned fixtures, windows, filing cabinets, and electrical power.
3. Check for injuries and provide assistance as needed.
4. Maintenance department should check for fires and shut off utilities to control gas and water leaks.
5. If major structural damage has occurred, the Emergency Control Committee should order a complete evacuation. The building should be inspected by Physical Plant for damage before reentry.
6. Physical Plant should then notify proper agencies, companies or departments as needed.

F. Flood

1. If outdoors:
 - a. Climb to high ground.
 - b. Avoid walking or driving through floodwater.

- c. If car stalls, abandon it immediately and climb to higher ground.
- 2. If indoors:
 - a. Be ready to evacuate as directed by the designated official.
 - b. Time permitting, move vital material and equipment to higher ground.

G. Hostile Intruder

If a person is observed acting unusual, engaged in an illegal activity, or seems out of the ordinary the observer should dial 911 and report it to the police. At that time, the caller will be given information and instructions concerning the circumstances.

IX. MEDICAL EMERGENCIES

Emergency Medical Service (EMS) personnel or those individuals who are trained by the American Red Cross will provide first aid. Until rescue personnel arrive, administer first aid in the building or, in the event of a complete evacuation, at a designated safe assembly area outside.

- A. Call **911** immediately if the injury is life threatening. Provide the following information:
 - 1. Nature of medical emergency.
 - 2. Location of the emergency (address, building, room number).
 - 3. Your name and the phone number from which you are calling.
- B. Do not move victim unless absolutely necessary.
- C. After calling 911, contact the Research Collections Circulation Counter at 855-4501 so they may assist in directing emergency personnel to the location of the emergency.
- D. Call the following personnel trained in CPR, AED and First Aid to provide the required assistance prior to the arrival of the professional medical help.

1.	Jim Champion	855-9299	CPR + AED + FA
2.	Jill Clancy	855-2018	CPR + AED
3.	Alexis Andronikos	855-7444	CPR + AED + FA
4.	Angela Dresselhaus	855-0383	CPR + AED + FA
5.	Martha Harsanyi	855-8065	FA
6.	Diana Payne	856-1425	CPR + AED
7.	Hans van der Genugten	855-5637	CPR + AED
- E. **The First Aid Kits are located at the Research Collections Circulation counter.**
- F. **An Automated External Defibrillator (AED) unit and first aid kit are located at the Information Commons Reference desk.**

- G. If personnel trained in First Aid are not available, as a minimum, attempt to provide the following assistance:
 - 1. Stop bleeding with firm pressure on the wounds (note: avoid contact with blood or other bodily fluids).
 - 2. Clear the air passages using the Heimlich Maneuver (abdominal thrusts or chest compressions) in case of choking.
- H. When rendering assistance to personnel exposed to hazardous materials, consult the MSDS and wear the appropriate personal protective equipment. Attempt first aid ONLY if trained and qualified. Call **911** and refer to Hazardous Substance Spill section of this document.

X. PROCEDURE FOR EMERGENCY SHUTDOWN OF OPERATIONS

An emergency shutdown of the Herman B Wells Library can be ordered by the Dean of the Libraries or the Dean’s designee in and in concert with: Physical Plant, law enforcement, the Office of Risk Management or local fire department. No employee should risk any type of injury. However, if time permits, personnel should perform the following duties:

- A. **An emergency shutdown of computers** should be accomplished in the event of a severe electrical storm. If time permits, exit the program and shut off the computer power supply.
- B. **Utility Controls** will be shut off by maintenance personnel who will know the location and operation of: main controls for **steam and electrical** supply leading into the building. For utility or building service emergencies, call 855-8728.
- C. **Critical Operations** will be shut down by assigned personnel.
 - 1. Designated personnel involved in critical operations may remain on site.

Assignments: **NO CRITICAL OPERATIONS AT THIS TIME**

Work Area	Name	Job Title	Assignment
-----------	------	-----------	------------

- 2. If the emergency situation will not permit any of the personnel to remain, contact the following offices: **NA**

XI. CHEMICAL, BIOLOGICAL, RADIOLOGICAL, NUCLEAR, EXPLOSIVE (CBRNE) THREAT

Indiana University policy is to evaluate bomb/CBRNE threats in order to determine the appropriate action that must be taken. The threat that a bomb/CBRNE has been planted is usually made via the telephone. In the majority of cases, these threats have been proved to be false and no device or material was located. However, the potential for loss of human life

and property is so great that each situation must be pursued and evaluated. For more information, refer to Bomb/Bio-Chemical Threat policy.

- A. **Telephone Threat:** The person receiving a telephone bomb/CBRNE threat should remain calm and obtain as much information as possible by completing the following **checklist** at the end of this section. If your phone is equipped with caller identification, write down the number that is on the display screen. After the caller hangs up, **immediately call 911**. Give all available information. Notify IUPD, then immediate supervisor.

- B. **Written Threat:** Written threats can come in the form of a note, letter or fax, through the U.S mail or campus mail. Any document will become evidence at the trial of any perpetrator. It may, in fact, be critical to a successful prosecution and positive identification of the perpetrator. It therefore is extremely important.
 - 1. **DO NOT** handle the envelope or letter/note any more than is necessary and limit the number of persons who touch these items. Know who the people are that have touched these items so elimination fingerprints can be obtained. Once proper notification has been made to police/security personnel, place the item(s) in a folder or large envelope to protect them and tell others not to handle them.
 - 2. Immediately call 911 to notify the campus police or persons with the safety/security responsibility at any IU facility.
 - 3. Safeguard the received material until it is given to the proper authority.

- C. **Suspicious Package:** If a suspicious package or device is found, **immediately** notify the police. **Do not touch or handle** any suspicious item! **Do NOT use the fire alarm**. Request all persons to leave the room the package is in.

If the package is a suspected bio-hazard (e.g. Anthrax): It is unlikely that any threat of exposure to a bio-hazard, such as anthrax, will be found, but the potential exists. All such threats should be taken seriously.

1. **Appearance**

- a. Powdery substance felt through or appearing on the package or envelope.
- b. Oily stains, discoloration, or odor.
- c. Lopsided or uneven envelope.
- d. Excessive packaging material such as masking tape, string, etc.
- e. Excessive weight.

2. **Handling Suspected Packages or Envelopes**

- a. Do not shake or empty the contents of any suspicious package or envelope.
- b. Do not carry the package or envelope, show it to others or allow others to examine it.

- c. Put the package or envelope down on a stable surface; do not sniff, touch, taste, or look closely at it or at any contents that may have spilled.
- d. Alert others in the area. Leave the area. Close any doors and assemble outside the room's entrance. Take actions to prevent others from entering the area.
- e. WASH hands with soap and water to prevent spreading potentially infectious material to face or skin.
- f. Notify IUPD, by calling 911, and your supervisor.
- g. If possible, create a list of persons who were in the room or area when the suspicious letter or package was recognized and a list of persons who also may have handled it.
- h. Await arrival of assistance.

C. **Bomb/CBRNE Threat Evacuation:** A bomb/CBRNE threat evacuation is entirely different from a fire evacuation. The use of fire alarms is not recommended since it does not allow for a controlled evacuation. Upon locating or being advised of a bomb/CBRNE threat, the building manager, her/his designee or the ranking member of the Main Library Emergency Control Committee will cordon off the area, wait until IUPD arrives, and then consult with the University Police for an evacuation decision. The University Police is responsible for ordering this type of evacuation. If a decision to evacuate is made, a uniformed police officer, going room-to-room, will notify occupants of the decision to evacuate. If evacuation takes place, do not re-enter until the building has been searched and declared safe by the authority having jurisdiction. **Primary evacuation routes must be searched prior to ordering an evacuation** unless the on-scene police officer determines otherwise.

TELEPHONE BOMB/CBRNE THREAT CHECKLIST

QUESTIONS TO ASK CALLER

- When is the bomb going to explode?
- Where is it?

- What building?
- What floor?
- What does it look like?
- What kind of bomb is it?
- What will cause it to explode?
- Did you place the bomb? Why?
- What is your address? Name?
- Can we help you?

EXACT WORDING OF THREAT

Sex of caller: M / F Race: _____ Approximate age: _____ Length of call: _____ Telephone # at which call received: _____
 Time received: _____ Date call received: ___/___/___ Nationality: _____

CALLER'S VOICE

___ Calm	___ Nasal	___ Soft	___ Angry	___ Stutter
___ Loud	___ Excited	___ Lisp	___ Laughter	___ Slow
___ Raspy	___ Crying	___ Rapid	___ Deep	___ Normal
___ Distinct	___ Slurred	___ Whispering	___ Clearing Throat	___ Ragged
___ Deep Breathing		___ Disguised	___ Cracking Voice	___ Accent

BACKGROUND SOUNDS/NOISES

___ Street Noise	___ Voices/Talking	___ Wildlife Sounds	___ PA System	___ Music
___ Static	___ Motor	___ Factory Machinery		___ Clear
___ Radio/TV	___ Long Distance	___ Local	___ Office Sounds	___ Weather
___ Cell Phone	___ Restaurant Sounds	Other (Specify) _____		

CALLER'S ATTITUDE & LANGUAGE

___ Well Spoken (education)	___ Incoherent	___ Profane/Foul	___ Irrational
___ Taped Message	___ Message Being Read		

REMARKS _____

Your name: _____ Your position: _____
 Your telephone: _____ Date checklist done: _____

(Keep this checklist near your phone.)

XII. HAZARDOUS SUBSTANCE

The following are the locations of:

Material Safety Data Sheet (MSDS): **For cleaning supplies, binder located in Room 055.**

Personal Protective Equipment (PPE): **N/A**

Spill Containment and Security Equipment: **N/A.**

Chemical Spill

Introduction: The **HAZardous Waste Operations and Emergency Response** standard, 29 CFR 1910.120 Paragraph (q) covers:

“Emergency response operations for releases of, or substantial threats of releases of, hazardous substances without regard to the location of the hazard.”

“Hazardous substances” includes substances that have the potential to cause either acute or chronic health problems due to chemical or physical properties.

“Location” means any place on the IU campus where chemicals are being used or stored, such as the Chemistry Building, Physical Plant, IU Art Museum, dark rooms, etc.

Releases are either incidental or emergency response situations.

A. **Incidental Release**

An incidental release is a release of a hazardous substance which does not pose a significant safety or health hazard (i.e., fire, explosion, or chemical exposure) to employees in the immediate vicinity or to the employee cleaning up the released hazardous substance. In addition, an incidental release does not have the potential to become an emergency within a short time frame. Incidental releases are limited in quantity, exposure potential, and toxicity and present minor safety or health hazards to employees in the immediate work area or those assigned to the clean up. Responses to incidental releases of hazardous substances where the substance can be absorbed, neutralized, or otherwise be safely controlled at the time of release by the employee in the immediate release area are not considered to be emergency response within the scope of this standard.

All employees that work with hazardous substances must be trained to protect themselves in handling incidental releases per the training requirements of the Hazard Communication standard (29 CFR 1910.1200) or the OSHA Lab Standard (29 CFR 1910.1450). Response to a release of this nature does not require full Hazardous Waste Operations & Emergency Response (HAZWOPER) training, this will be covered in the next section.

B. Emergency Response Situation

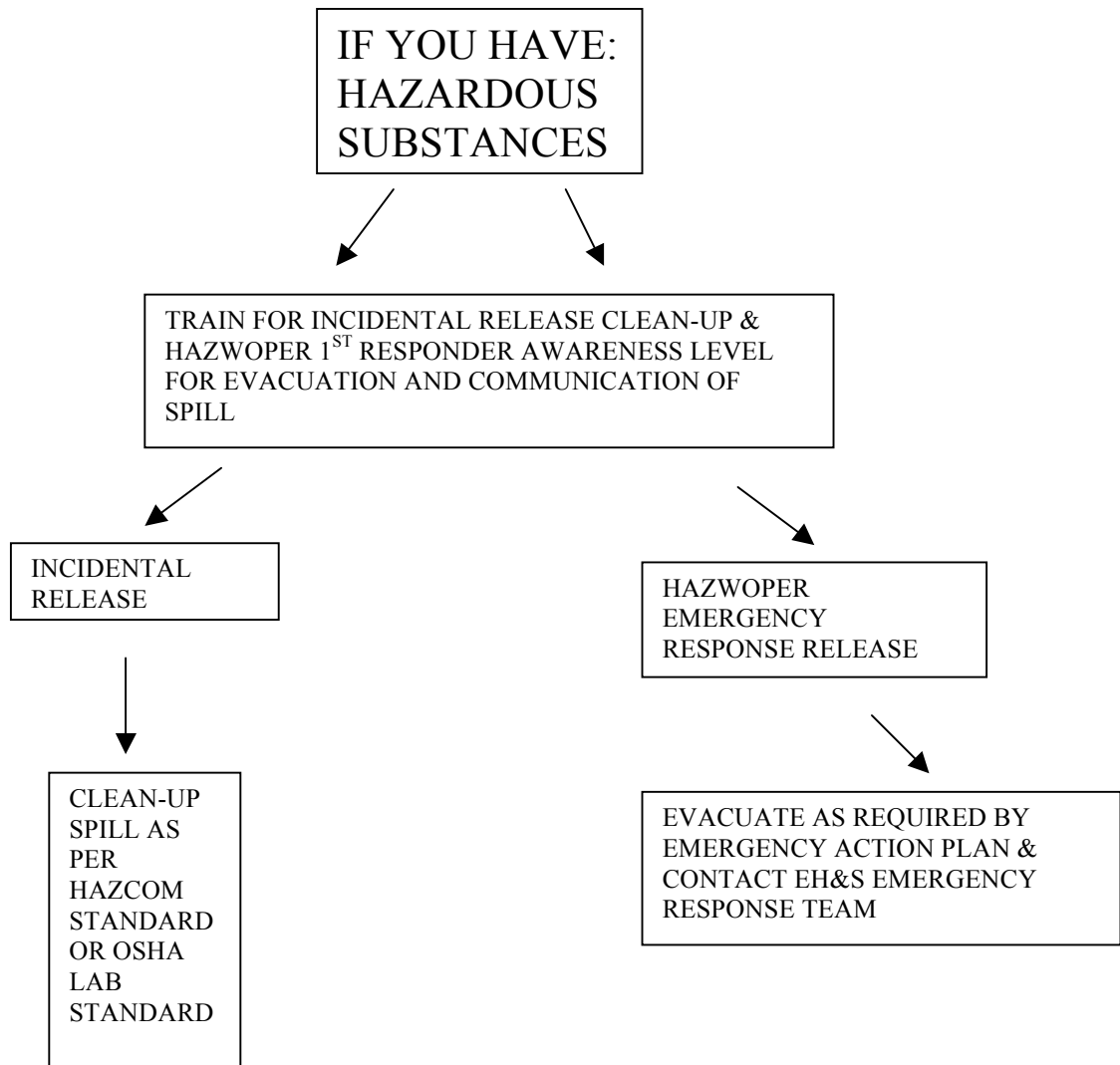
A release that requires an emergency response regardless of the circumstances is defined by the situation and requires full HAZWOPER training. An emergency response includes the following situations:

1. The response comes from outside the immediate area of the release. (This includes in-plant personnel who are outside the immediately affected area but respond to the release.)
2. The release required evacuation of employees in the area.
3. The release poses, or has the potential to pose Immediately Dangerous to Life and Health (IDLH) conditions.
4. The release requires immediate attention because of imminent danger.
5. The release may cause high levels of exposure to toxic chemicals.
6. One is uncertain as to whether the employee in the work area can handle the severity of hazard considering the Personal Protective Equipment (PPE) and equipment provided.
7. The situation is unclear or data are lacking on important factors.

Whether a situation is incidental or requires an emergency response must be determined on a case-by-case basis, however, the prime component is knowledge and understanding of the chemical, its hazards, and proper handling procedures. Other factors that play a role in this determination are the quantity released, ventilation considerations, confined space considerations, and personal protective equipment available. Essentially, one must determine what the circumstances are, then determine the capabilities of the personnel available, and lastly determine whether the release is incidental or warrants an emergency response. **Therefore, if a release occurs and it is considered more than incidental, you should contact the Department of Environmental Health and Safety's (DEHS) Emergency Response Team at 855-6311 or by dialing 911 after hours.**

There is a possibility of an emergency response situation in any area that contains hazardous substances. The principal investigator (or supervisor) for each area is responsible for determining if such a HAZWOPER emergency response situation could occur under a worst-case scenario. All HAZWOPER emergency response would require evacuation of personnel. The Principal Investigator (or supervisor) must designate employees who have training and competency as a HAZWOPER *First Responder* to decide if other employees need to be evacuated under 29 CFR 1910.38 (a), Emergency Action Plans. The spill could then be addressed by DEHS's Emergency Response Team. As in the past, DEHS will provide an advisory role to incidental spill response if assistance is needed.

C. **Response Flow Chart**



XIII. FIRE PREVENTION AND WORKPLACE HAZARDS

A. **Employee Responsibility**

It is the responsibility of all employees to prevent any type of fire in the building. Listed below are general items to accomplish this objective:

1. Follow general guidelines listed in this plan. You may also refer to the Faculty Emergency Procedures Handbook.
2. Smoking is not allowed in Indiana University buildings. Extinguish all cigarettes in proper receptacles.
3. Do not put any type of hot object, such as cigarette butts, in trash cans.

4. All employees will know the evacuation routes and exits, and will proceed to them when instructed.

B. Listing of Typical Fire and Workplace Hazards

Call the Office of Risk Management, 855-9758, with specific fire/safety questions.

1. **Electrical circuits**, wiring and extension cords worn and frayed.
2. **Electrical Appliances**, such as, coffee pots, microwaves and portable heaters left unattended or on at the end of the day.
3. **Flammable Solvents**, such as, gasoline, paint thinner or degreaser, in amounts greater than maintenance quantities.
4. **Flammables & Combustible liquids** not stored in a designated area or storage cabinet. (Refer to laboratory safety standards.)
5. **Impaired Fire Controls**
 - a. Fire and smoke doors blocked open.
 - b. Storage and trash in stairways and hallways.
 - c. Storage closer than 18 inches to sprinkler heads.
6. **Oil-soaked Rags**. Store dirty rags in a metal container with a lid.

C. Housekeeping

Good housekeeping will be the responsibility of **ALL** employees.

1. Waste materials are to be discarded in their proper places.
2. Heat producing equipment shall be maintained in good working order and a minimum of 36 inches from combustible items.
3. Personnel are responsible for keeping their work areas neat and orderly.
4. All aisles and exits will be kept clear.
5. Access areas to fire extinguishers will be kept clear.
6. Emergency telephone number, **911**, will be posted on all telephones.
7. Each supervisor will be responsible for properly training their employees who are required to handle, store and maintain hazardous materials.
8. All fire/smoke doors are to remain closed and unobstructed from their intended function of retarding the spread of fire and smoke.

D. Maintenance of Fire Equipment and Systems

Refer questions and problems regarding the fire sprinkler and/or smoke detector systems, fire extinguishers and their locations to Operations Center/Control Center (855-8728).

XIV. NEWS INFORMATION

Information to the news media will only be released through the Office of the Vice President for University Relations: 855-0850 or cell phone: 812-360-0909.

XV. POST-EMERGENCY EVALUATION

Following any emergency, a post-emergency evaluation will be conducted to evaluate the cause, employee and outside department actions, and to determine what corrective or preventative actions are necessary.

XVI. FOR FURTHER INFORMATION REGARDING THIS PLAN, CONTACT:

The Building Manager, **Jim Champion, 855-9299, jchampion@indiana.edu**, his designee or any member of the Wells Library Emergency Control Committee listed below:

Alexis Andronikos, IC/UGLS	855-7444, aandroni@indiana.edu
Jennifer Chaffin, Human Resources	855-5407, jchaffi@indiana.edu
Jill Clancy, SLIS	855-2018, jilclanc@indiana.edu
Angela Dresselhaus, Technical Services	855-0383, slaughta@indiana.edu
Jane Goldsmith, Chief CWA Steward	855-8237, goldsmi@indiana.edu
Lynn Hufford, Preservation	855-8155, hufford@indiana.edu
Jennifer Kelly, LHR	855-5988, jasingle@indiana.edu
Randy Lent, Circulation Security	855-8249, lent@indiana.edu
Arlene Merkel, SLIS	855-2018, amerkel@indiana.edu
Diana Payne, Google Project	856-1425, diapayne@indiana.edu
Fran Sturgis, Stacks Manager	855-3706, fasturgi@indiana.edu
Hans van der Genugten, Tech. Services	855-5637, hvander@indiana.edu

XVII. DEFINITIONS

Ademco -----	Brand name for automatic telephone dialer.
Assembly Area -----	Designated safe area for gathering groups of people during an emergency. Contingent on the type of emergency, may be indoor or outdoor.
BTFD -----	Bloomington Township Fire Department.
DEHS -----	Department of Environmental Health and Safety.
Emergency Control Center	Designated area from where staff members report during an emergency to be assigned various responsibilities and where building emergency operations are controlled.
Emergency Control Committee (ECC)	Building occupants with authority to make decisions affecting the university in an emergency.
EMS -----	Emergency Medical Service.
Floor Warden -----	Person who assists Emergency Control Committee during emergency situations, warns and checks on occupants, and assists in maintaining control of scene.
Hazardous Substances -----	Includes every known chemical.
HVAC -----	Heating, Ventilation and Air Conditioning.
HSAS -----	Homeland Security Advisory System.
IDLH -----	Immediately Dangerous to Life and Health.
IUPD -----	Indiana University Police Department.
LEL -----	Lower Explosive Limit.
MSDS -----	Material Safety Data Sheet.
NOAA -----	National Oceanic and Atmospheric Association. Radio information available from weather receivers or scanners in Bloomington at 162.45 MHz.
PI -----	Principal Investigator.
PPE -----	Personal Protective Equipment.
Ranking Member -----	Member of Emergency Control Committee with superior rank or knowledge.